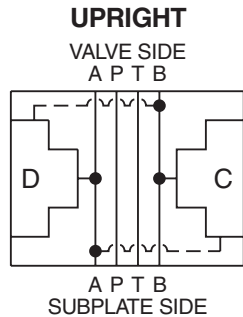


**General Description**

A and B Crossover D03 Cartpak Body.  
 For additional information see Technical Tips on pages CB1-CB3.

**Body Schematic**



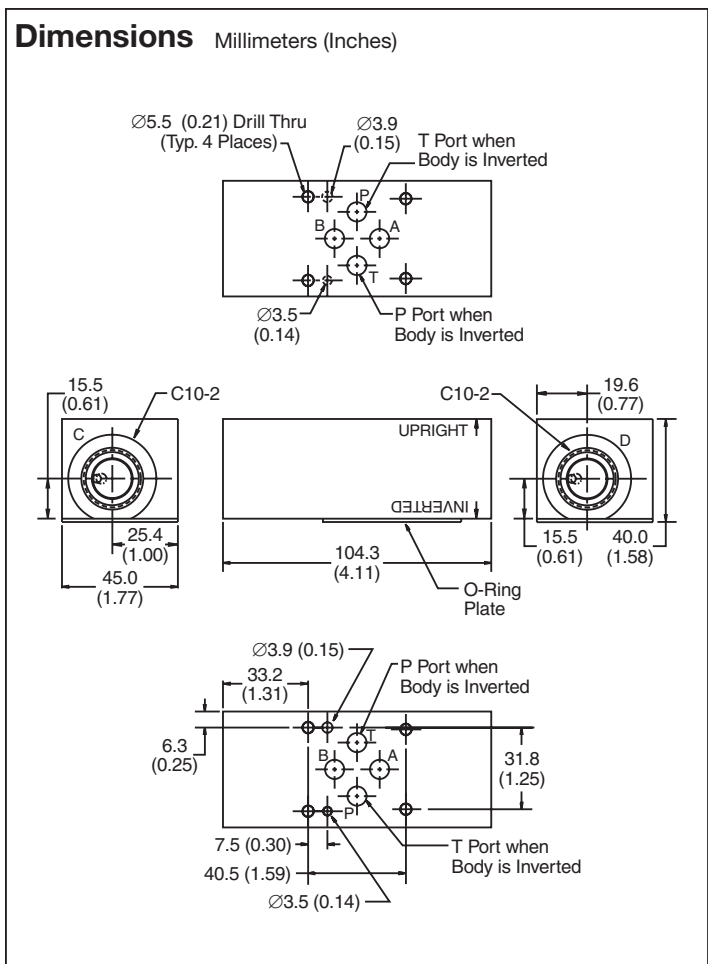
**Ordering Information**



Code	Plug Seals
Omit	Nitrile

Code	Body Material
A	Aluminum
S	Steel (Ductile Iron)

**Body supplied with:**  
 • O-Ring Plate, O-Rings and Drive Pin Kit



**Option 1**  
 Cavity C: RAH101, RD102  
 Cavity D: RAH101, RD102

**Option 2**  
 Cavity C: RDH103  
 Cavity D: RDH103

**Direction:** Upright

**Option 1**  
 Cavity C: P10-2  
 Cavity D: RDH103

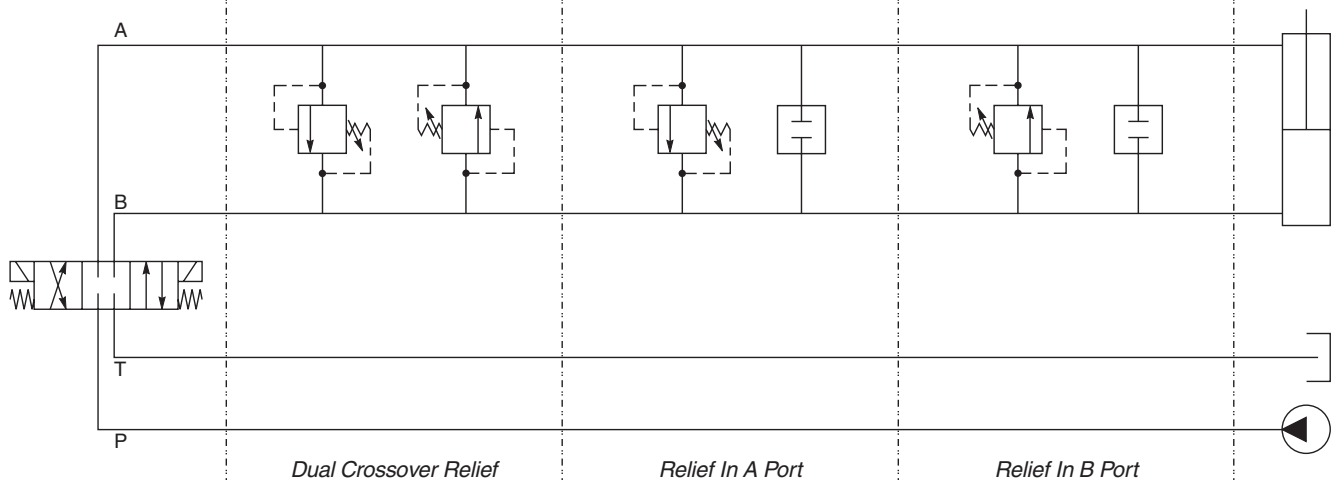
**Option 2**  
 Cavity C: RAH101, RD102  
 Cavity D: P10-2

**Direction:** Upright

**Option 1**  
 Cavity C: RDH103  
 Cavity D: P10-2

**Option 2**  
 Cavity C: P10-2  
 Cavity D: RAH101, RD102

**Direction:** Upright



<b>CV</b>
Check Valves
<b>SH</b>
Shuttle Valves
<b>LM</b>
Load/Motor Controls
<b>FC</b>
Flow Controls
<b>PC</b>
Pressure Controls
<b>LE</b>
Logic Elements
<b>DC</b>
Directional Controls
<b>MV</b>
Manual Valves
<b>SV</b>
Solenoid Valves
<b>PV</b>
Proportional Valves
<b>CE</b>
Coils & Electronics
<b>CB</b>
Cartpak Bodies
<b>BC</b>
Bodies & Cavities
<b>TD</b>
Technical Data